

### Duration, period and location of the course

The course is given every year and lasts for 3 weeks, fulltime (120 credit hours – 5 EC). The next course will be given:

**January 7 – 25, 2013**

Lectures and practicals will be given at Naturalis (National Herbarium of the Netherlands), Van Steenis Building, Einsteinweg 2, Leiden, The Netherlands. This location is c. 15 minutes walking distance from Leiden Central Station.

### Costs

The costs of the course are 25 Euro (syllabus) for Biology students of Leiden University, Naturalis, and of the Dutch Research School Production Ecology and Resource Conservation, 220 Euro for other students at Dutch Universities, and 660 Euro for others (costs for accommodation and air fare are not included).

### Accommodation

Information on accommodation can be obtained from the following websites:

[www.universityguesthouse.leidenuniv.nl](http://www.universityguesthouse.leidenuniv.nl)

[www.booking.com/Leiden](http://www.booking.com/Leiden)

[www.hotels.nl/leiden](http://www.hotels.nl/leiden)

### Exam

The course will end with a recognition exam. The participants will be expected to identify 30 selected collections to the family level. All participants who pass the exam will receive a certificate.



### More information and subscription

The number of participants is limited to a maximum of 25 due to the limited amount of practical material.

### For more information please contact:

Dr. Marco Roos ([Marco.Roos@Naturalis.nl](mailto:Marco.Roos@Naturalis.nl)) or

Dr. Tinde van Andel ([Tinde.vanAndel@Naturalis.nl](mailto:Tinde.vanAndel@Naturalis.nl))

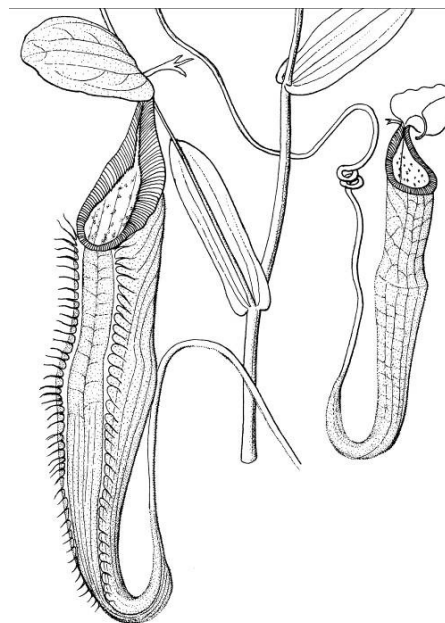
Dr. Daniel Thomas ([Daniel.Thomas@Naturalis.nl](mailto:Daniel.Thomas@Naturalis.nl))

Naturalis Biodiversity Center (section NHN), Leiden University, Postbus 9514, 2300 RA Leiden, The Netherlands; Tel: 00-31-71-5273500  
[www.nationaalherbarium.nl](http://www.nationaalherbarium.nl), [www.naturalis.nl](http://www.naturalis.nl)

Please send your application for admittance before December 10, 2012, to the NHN secretary Mrs Hanneke de Wolf ([Hanneke.deWolf@Naturalis.nl](mailto:Hanneke.deWolf@Naturalis.nl)).

# Course on Tropical Plant Families

with Emphasis on Non-timber Forest  
Products



**January 7 – 25, 2013**



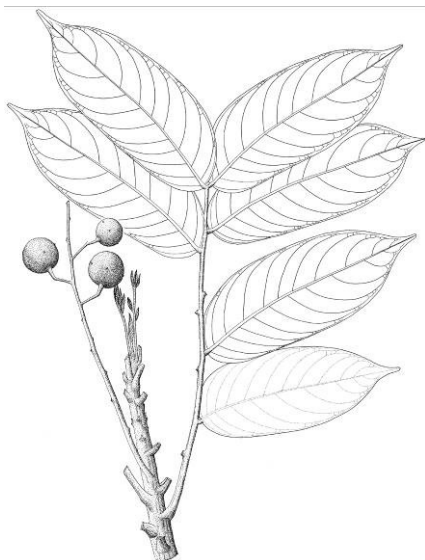
NATIONAAL  
HERBARIUM  
NEDERLAND

Hortus  
*botanicus*

LEIDEN

de hortus  
Hortus Botanicus Amsterdam - anno 1638

This folder is to inform you about the 'Tropical Plant Families' course at Naturalis Biodiversity Center. It provides information for biologists and interested persons without a botanical background about the program, data, costs, exam and contact persons.



### Why a course on tropical plant families?

The tropics comprise a number of hotspots of global biodiversity: together they contain more than two thirds of vascular plant species worldwide with a density 10 times higher than the European flora.

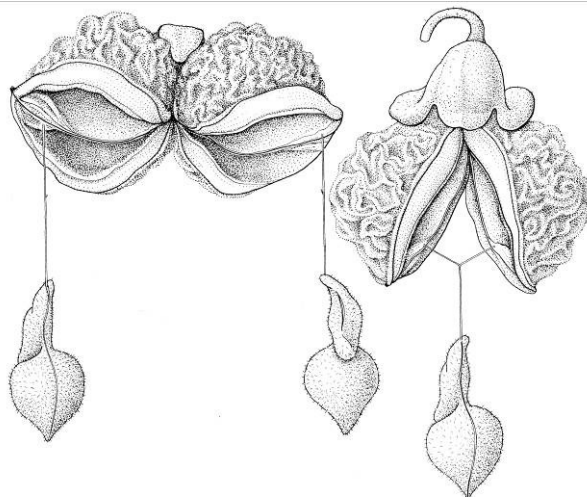
The tropics are home to many well known and economically important plant taxa, like yam, nutmeg, rattan, bananas, rambutan, meranti and cocoa. The botanical diversity of tropics is being documented by Naturalis in international projects, like Flora Malesiana, Flora of the Guianas and the Flore du Gabon. One of the aims of Naturalis is the knowledge transfer of plant diversity. That is why this course has been set up.

### Target group

The recognition of many plant taxa in the field is often problematic, i.e. during collection expeditions, when doing ecological inventories, for studies on animal behavior, ethnobotany, pollination and dispersal. Species diversity is high, only few plants are flowering and good floras are often not yet available.

This course is designed for undergraduate and postgraduate students interested in the botanical wealth of the tropics. You will learn how to make good plant collections, how to describe field characters and how to recognize some of the important plant families. You can get help with the identification of previously collected material too.

At the beginning of the course the necessary botanical terms will be explained. Therefore, anthropologists and environmentalists, as well as biologists will also be able to follow the course. If foreign participants are present, the course will be given in English.



### Program

The participants will learn to recognize a selection of economically and ecologically important plant families with the help of generative (flower and fruit) and vegetative (leaf and bark) characters. Generally, two to three plant families will be treated per day. Specialists working at Naturalis will give lectures with ample illustrations about plant families of that day and some important genera. In addition to the traditional floras, participants will also learn to use online interactive keys. During the practical the participants will be able to examine living, herbarium and alcohol preserved material. During excursions to the tropical greenhouses of several botanical gardens attention will be paid to collection techniques and field characteristics.